

LESSONS FROM THE DESIGN OF BLUE CIRCLE HEALTH'S CLINICAL CARE, EDUCATION & SUPPORT PROGRAM

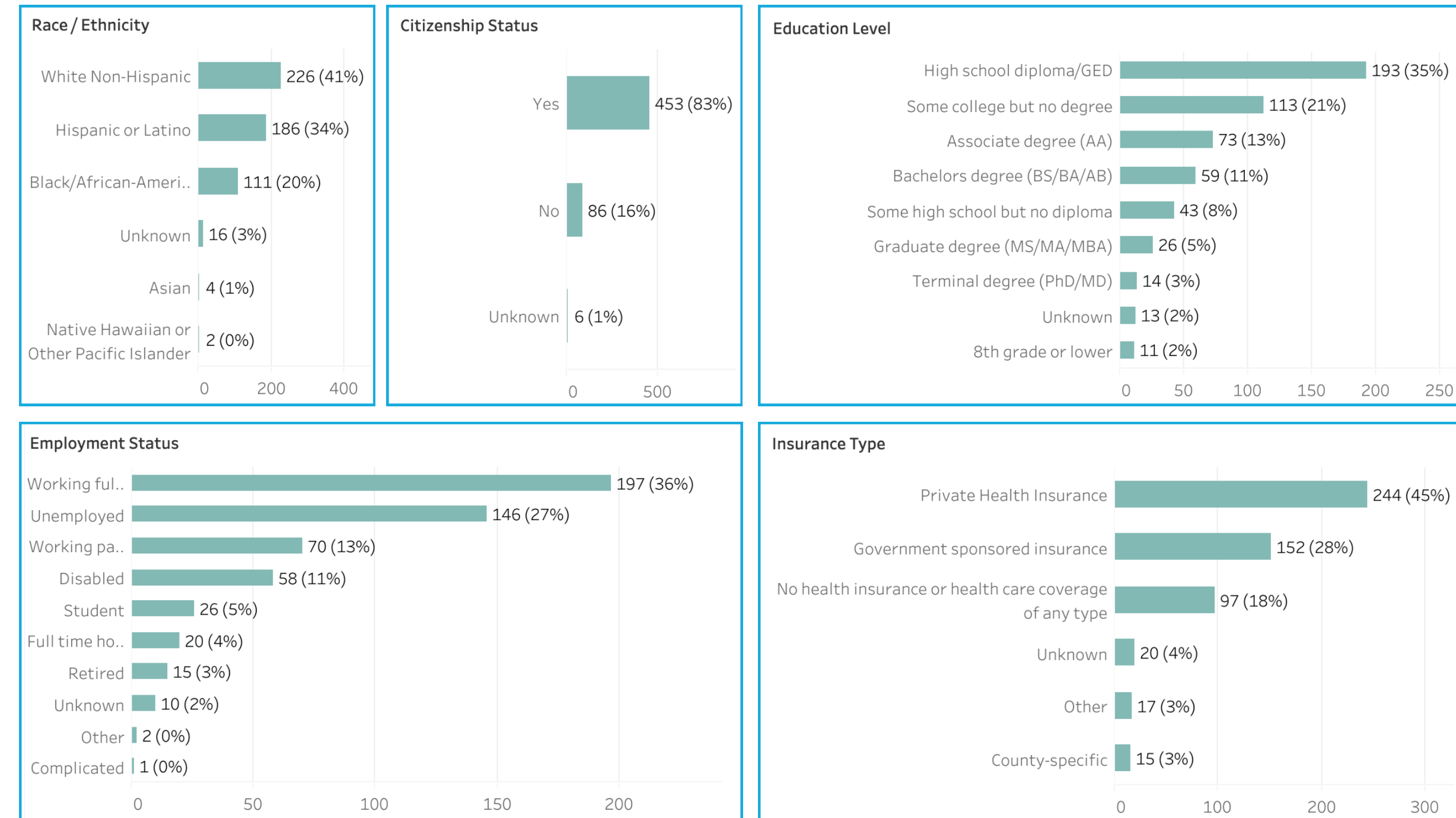
CLOSING THE T1D CARE GAP

There is a gap between what people living with type 1 diabetes (T1D) need, and what is available from the fee-for-service healthcare system. In 2022, The Leona M. and Harry B. Helmsley Charitable Trust gathered T1D experts to address this gap.

Their answer was the formation of **Blue Circle Health, a 501(c)(3) offering a 6-month free, virtual clinical care, education and support program for adults living with T1D.**

450+
Participants from
5 states served
in 2024

WHO WE SERVE

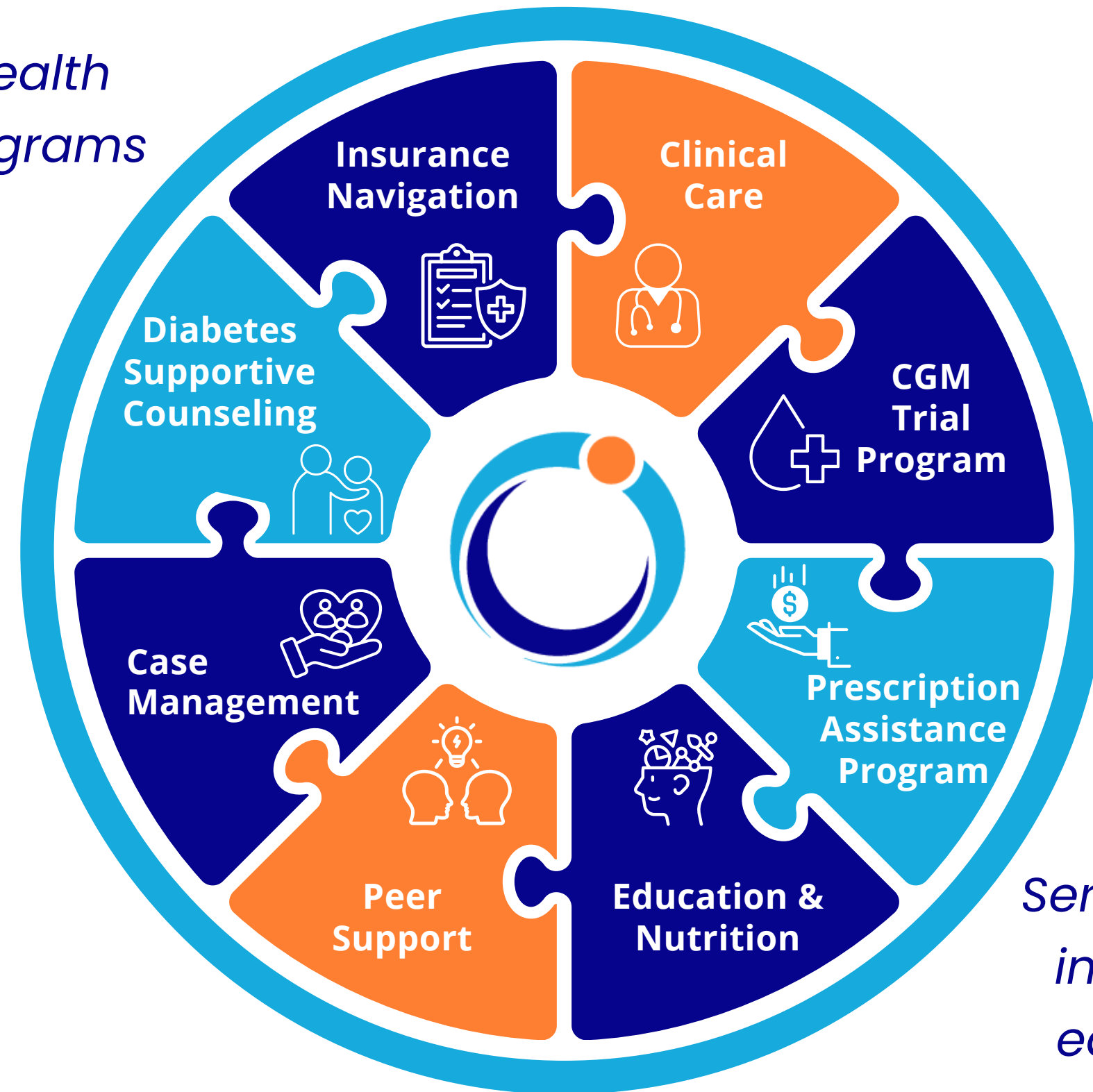


AN EHR DESIGNED TO MEET NEEDS, NOT FOR BILLING

The Needs-Action-Evidence (NAE) framework was designed to capture participants' unique needs, take empowering actions, and record evidence of the need being met. This NAE framework is at the core of Blue Circle's electronic health record, empowering the team to work collaboratively on meeting needs.

A TEAM OF EXPERTS TAKING A HOLISTIC APPROACH

Blue Circle Health
Services & Programs



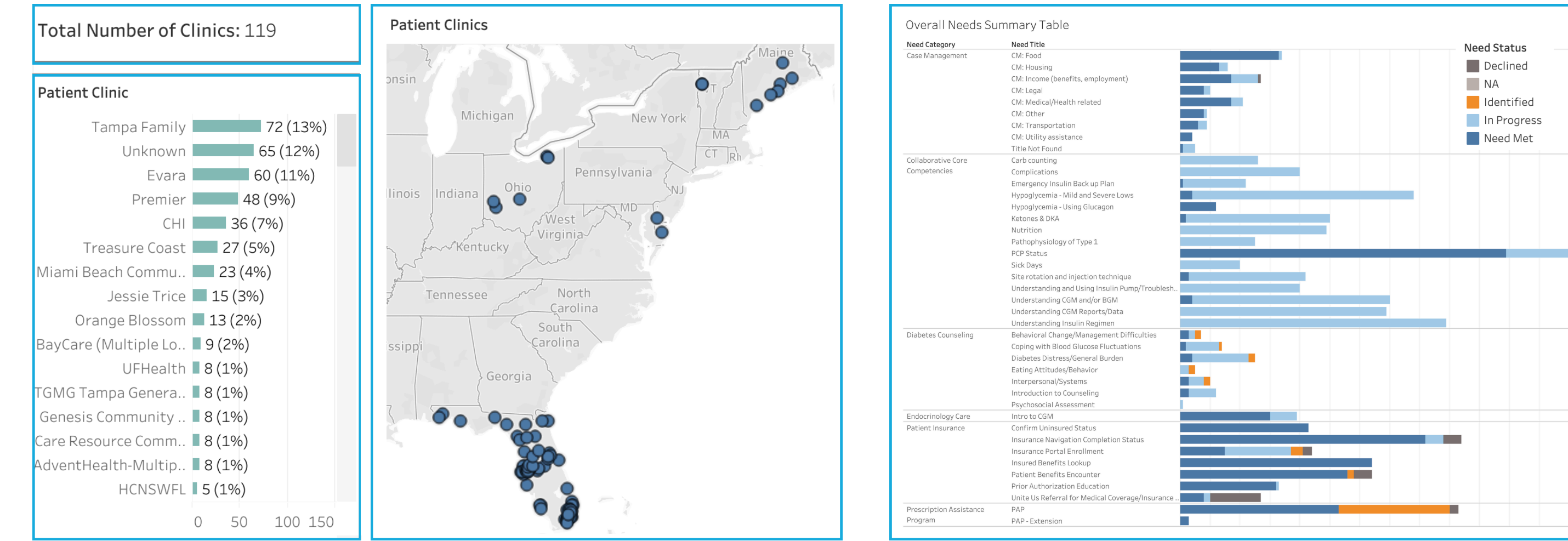
Services are provided in conjunction with each patient's PCP and/or endocrinologist

CARE PLANS TAILORED TO EACH PERSON

No two patients' needs are the same, so each patient receives an individual care plan. The services requested and provided emphasize the importance of offering more than traditional clinical care.

YESTERDAY'S DATA USED TO IMPROVE TODAY'S CARE

Thousands of process and outcomes datapoints are collected on a daily basis and integrated into operations to create a learning healthcare system.



GEOGRAPHIC EXPANSION

The program is now live in **Alabama, Delaware, Florida, Maine, Missouri, Ohio & Vermont** and will continue to expand throughout 2025. Scan the QR code to visit the website to learn more and to refer patients. Eligible patients can also sign up directly on the website.

"I was doing everything in my power to get my blood sugar down, but I didn't have the right tools...even though I've been a diabetic my whole life. Thanks to Blue Circle Health, I feel like I have my life back."
-Natalia, T1D since age 4

Visit the website

Hear from patients!