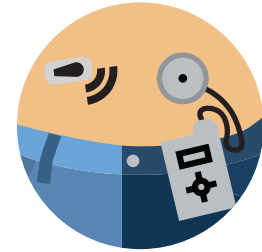
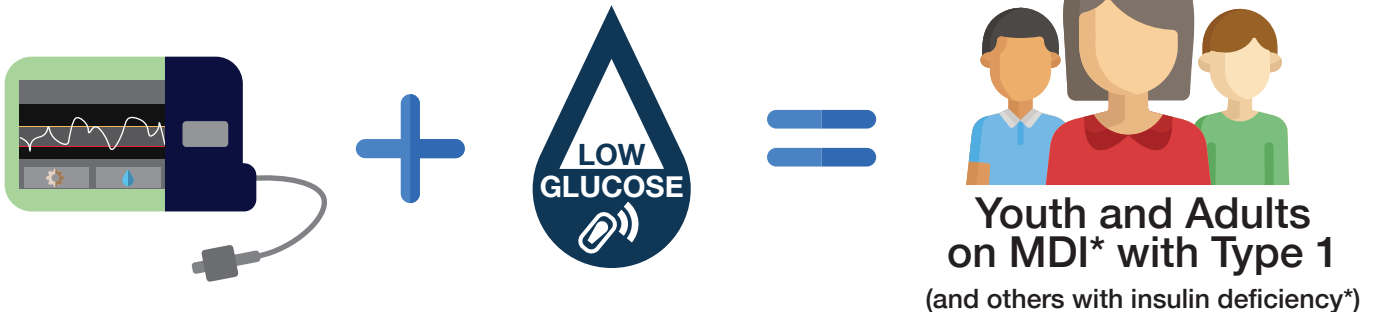


Insulin Pumps and Automated Insulin delivery systems (AIDS)

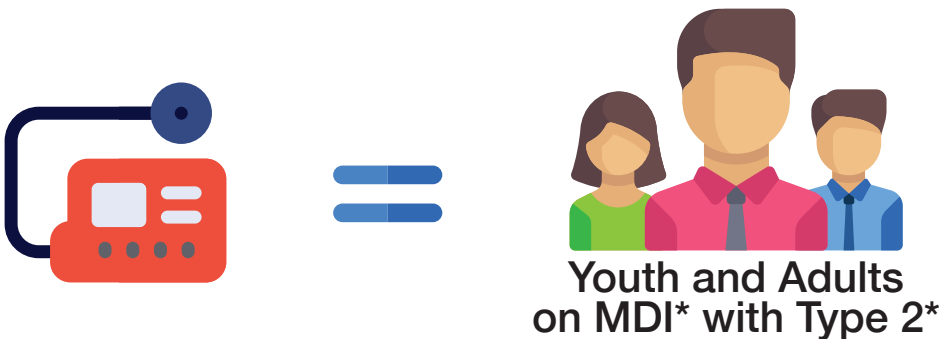
Offer AIDS to youth and adults with type 1 diabetes.*



Insulin pump therapy alone +/- sensor-augmented low glucose suspend should be offered to:



Insulin pump therapy alone can be offered to:



Learn more about
Time in Range



professional.diabetes.org/tir

*For those capable of using the device safely (either or with a caregiver). The choice of device should be made based on patient circumstances, desires, and needs.

*MDI, multiple daily injections